

From 0 to 100 on Velvet Paws!
Premium LED dimmer LED-04B-ANA-V2



Our non-PWM LED dimmer convinces with perfect dimming in the highest resolution and can be configured with up to 6,200mA.

LED dimmer LED-04B-ANA-V2



Perfect dimming of light in theatres, event halls and concert halls

With this dimmer, LEDs can be dimmed down to 0% precisely and without flickering. Our non-PWM dimmer is suitable for all types of LEDs that can be controlled via constant current or unregulated constant voltage up to 52V. The LED dimmer supports various communication protocols that can be activated as needed: ISYGLT, DMX512 in 8/16-bit, DMX-RDM or DALI.

For optimal integration, we also offer our ISYGLT system, which we also use to programme all systems functionally. The ISYGLT system offers the best combination of performance / speed and reliability / failure safety in compliance with all standards, including emergency lighting functionality. Added to this are the almost infinite possibilities of ISYGLT's free programmability.

Lighting modernisation for the future

The ban on many conventional light sources is causing problems for many building operators. With our dimmers, you can switch to state-of-the-art LED technology, refurbish or replace luminaires and also improve control options.



Our premium module for absolutely flicker-free dimming of LEDs and LED lights from 0 to 100%.

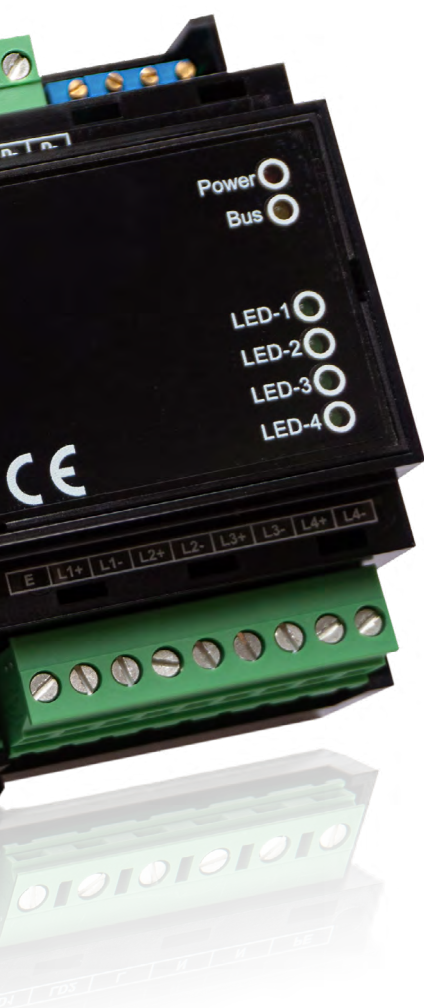


Control:

- ISYGLT BUS
- DMX512 8 bit and 16 bit
- DMX-RDM
- DALI BUS
- emergency operation

Non-PWM dimmer

This dimmer works absolutely without pulse width modulation. It enables to control perfectly the LEDs at a dimming resolution of 19 bits (internal resolution) in the brightness range between 0% and 100%. The LED dimmer can be set from speed calculation to absolute time calculation by parameterisation per channel. With this, all sorts of control tasks can be easily realised: from individual light dimming to use for elaborate light and colour scenarios.



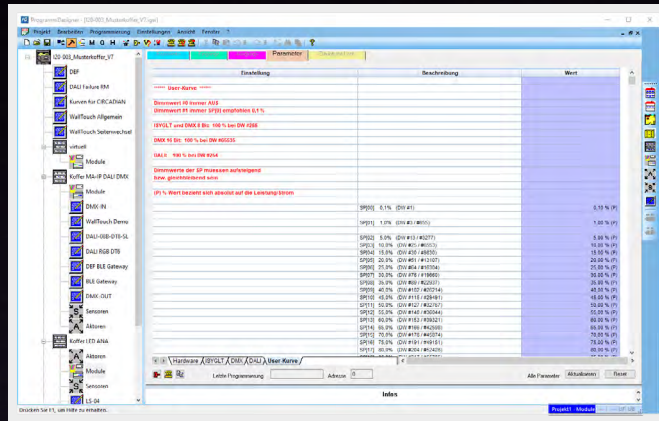
Universally useable:

- special cable lengths are possible
- dimming of constant current and unregulated constant voltage LEDs
- stepless current adjustment

Software

Parameterisation with ProgrammDesigner

The ISYGLT ProgrammDesigner offers a wide range of parameterisation options:



- channel single operation or coupling
- setting of a dimming curve
- minimum and maximum values



Suitable for design luminaires

Wide performance spectrum

Each channel is individually stepless adjustable from 250mA to 1550mA and is reliably processed.

Flexible cable lengths

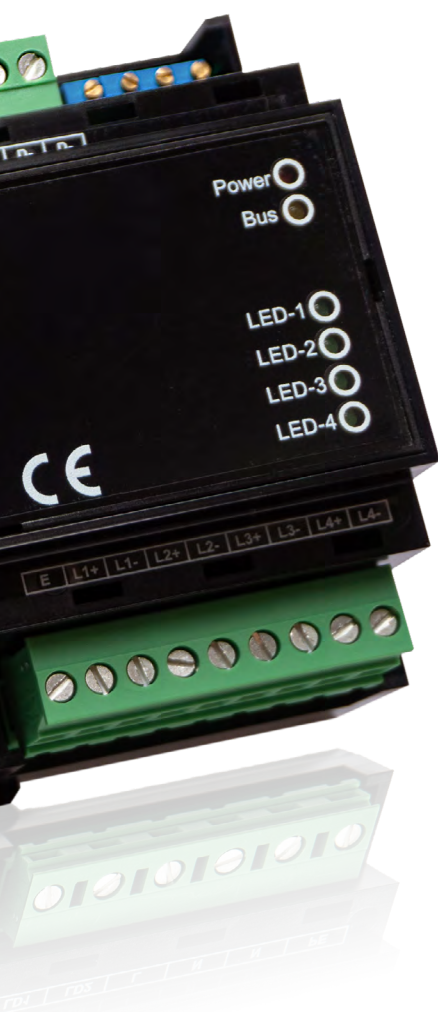
Very delicate designs are possible because the necessary ballasts can be placed at a great distance from the luminaires.

Efficient maintenance

The design allows the installation of central dimmer cabinets and offset cabinets, thus significantly minimising the maintenance effort.

Operating fields

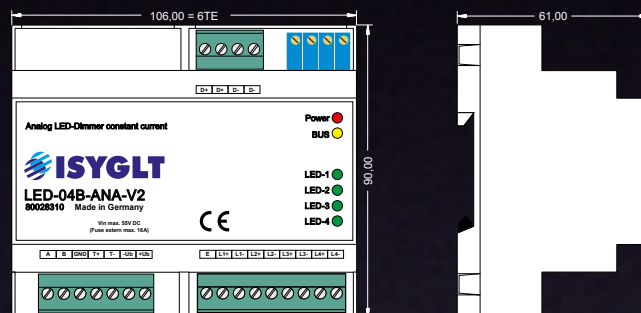
This dimmer is predestined for all areas where attention is paid to high-quality lighting. Just like in nature, this analogue dimmer regulates the required light intensity precisely without flickering, harmoniously and exactly as it corresponds to our human visual habits. Thus, the use of non-PWM dimming is particularly recommended in areas where people spend longer periods of time and where high demands are placed on the quality of light.



Outputs:

- 4 outputs separately adjustable with 250mA to 1550mA each for power LEDs
- 1 emergency operation input, e.g. emergency operation = 100%
- 1 ISYGLT, DMX512 8/16-bit, DMX-RDM or DALI pin

CAD view



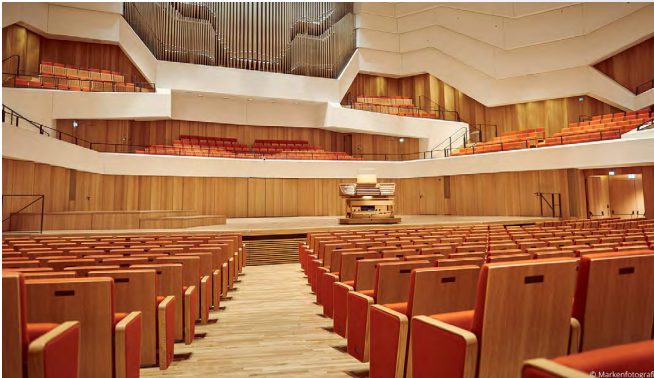
Technical Data

| | |
|---|---|
| Type designation | LED-04B-ANA-V2 |
| Article no. | 80028310 |
| Operating voltage | 24V to 56V DC for supplying the LEDs depending on the type |
| Mains fuse | max. 16A at Umax 56V DC |
| Output | 4 x constant current, channels can be coupled, adjustable separately at the factory with each 250mA to 1550mA (please specify the desired current value for each circuit when ordering) |
| Power loss | Idle circuit: 0.162W / channel Full load and worst conditions: 2.5W / channel |
| Dimming resolution | 19 bits |
| BUS control | ISYGLT / DMX512 8/16-bit, DMX-RDM, DALI |
| Design | Plastic housing light grey, can be snapped onto 35 mm mounting rail 6 HP |
| Dimensions | LxWxH 106x90x61mm REG |
| Weight | 250g |
| Connection | Screw terminals 2.5mm ² |
| Operating temperature | -10°C to +45°C |
| Storage temperature | -25°C to +70°C |
| Humidity | 0...85 % r.h. non-condensing |
| Protection | IP 20 |
| Cable length power supply to LED dimmer | max. 20m (pay attention to the maximum permissible voltage drop when calculating the cross-section of the cable) |
| Cable length LED dimmer up to last LED | max. 50m |
| Protection class | III |
| CE mark | yes |

Usages

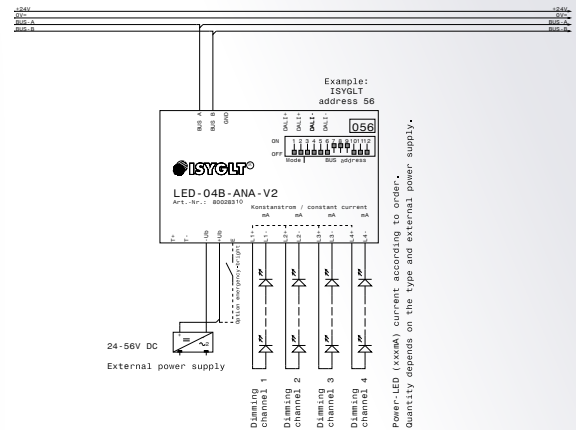
Examples of wiring diagrams

Concert halls

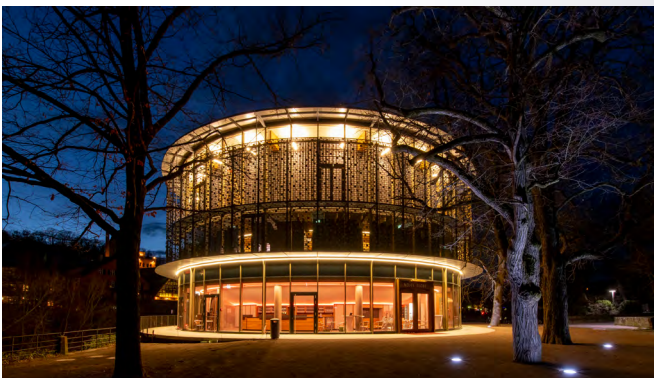


Hall lighting that behaves 100 % camera-compatible.
Kulturpalast Dresden / © Marken fotografie

Control via ISYGLT

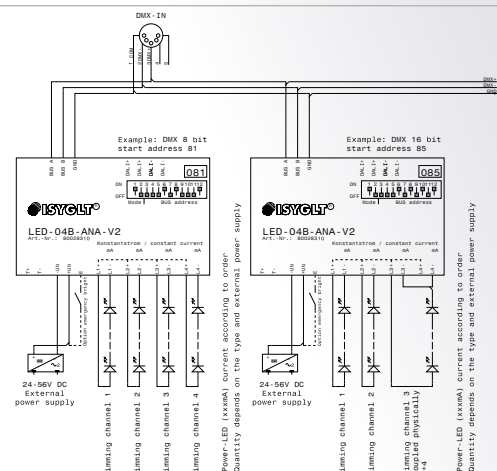


Theatre



Theatre lighting that can be maintained with little effort thanks to a centrally positionable mounting.
The 'Neues Globe' at night / © Jürgen Weller

Control via DMX512

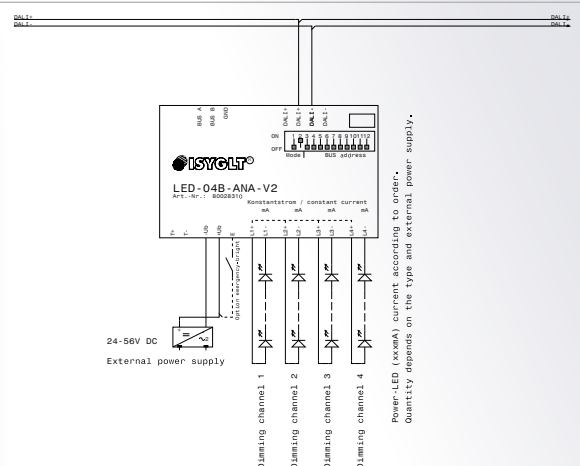


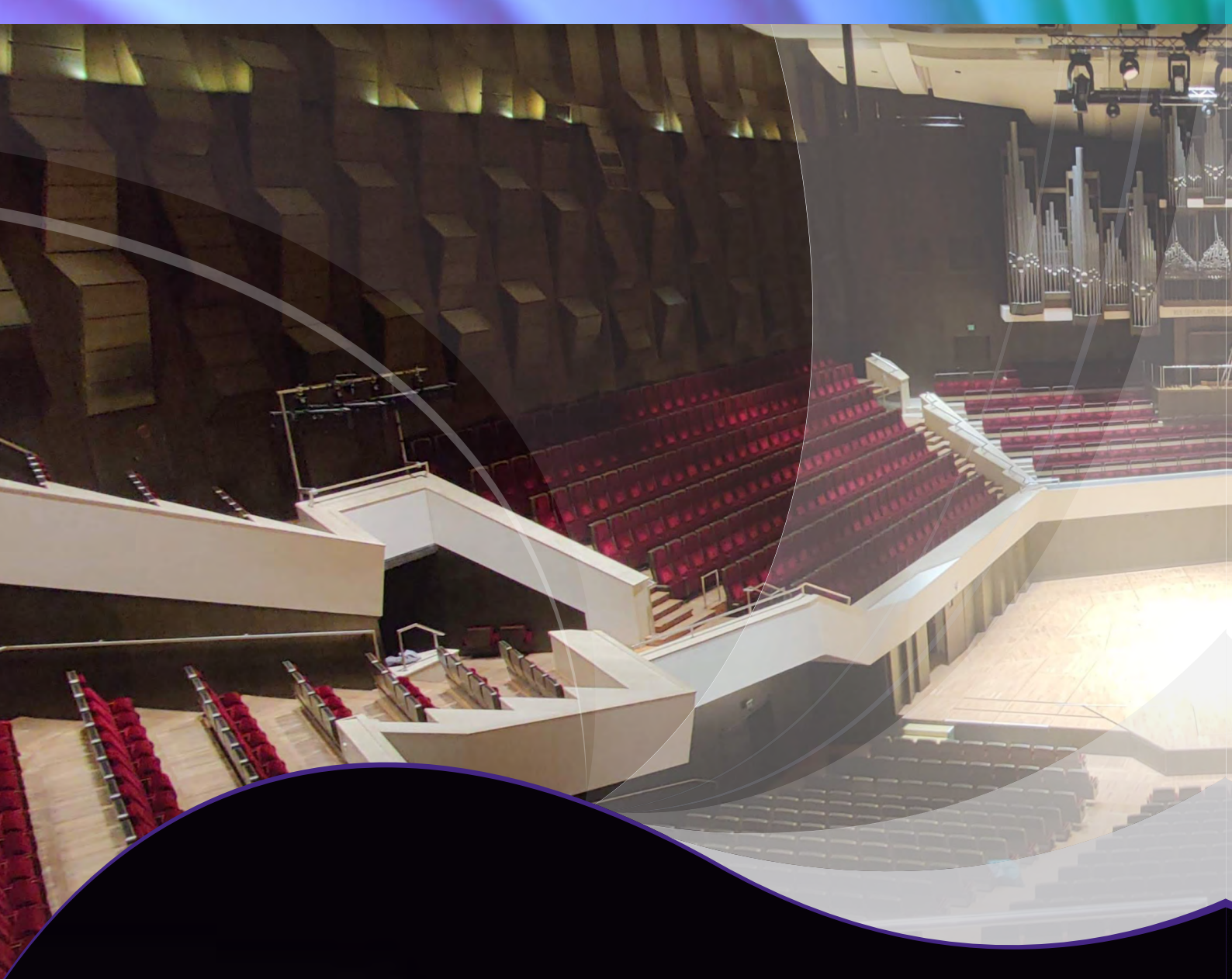
Planetariums



Dimming behaviour that has no equal: especially in the lowest range, dimmable down to only 0.001 % luminous flux.
© Planetarium Bad Tölz

Control via DALI





Professional dimming

Not the right dimmer for your requirements?

Our product range includes other dimmers for almost every application. Please contact us!



www.isyglit.de/com

ISYGLT Germany
Seebacher GmbH
83666 Waakirchen
Phone: +49 8021 50434-0
Mail: info@seebacher.de

ISYGLT Germany
multisenses GmbH
32791 Lage
Phone: +49 5232 98019-90
Mail: info@multisenses.de

ISYGLT Switzerland
se Lightmanagement AG
8957 Spreitenbach
Phone: +41 56 4187611
Mail: info@se-ag.ch

ISYGLT Netherlands
Light Technology Nederland BV
5126 GB Gilze
Phone: +31 13 5900130
Mail: info@light-technology.nl