

Room Controller RC-T-IR-D with LCD display



General

The room controller is in relation to operating units the link between normal keys and a touch panel. As with all ISYGLT modules manifold operational possibilities were esteemed. The basic functions of the room controller differ in the variants with or without display.

The most important benchmark figures:

- 12-18 keys (surrenders to the layout by single or doublekeys)
- For a key evaluation 4 stiff levels are available
- Graphics-capable display for interactive menu control
- The feedback LED and the display brightness are dimmable ambient dependent by a integrated light sensor and thus to the environment brightness customisable optimally
- The feedback LED can be used as a orientation aid by a setable minimum light level (e. g. 2%)
- Integrated buzzer for key receipt tones, failure messages or acoustical fault indications
- Integrated 36kHz infrared receiver. In conjunction with our remote control IRS-55T-LC the functions can be controlled wireless.

Inputs / Outputs

- 12-18 keys
- IR receiver 36kHz
- Up to 18 dimmable feedback LED red
- Display background illumination
- Buzzer

Display

- Graphics-capable LCD display with white dimmable background illumination

Function displays

- 1 yellow LED indicates by permanent flashing the operating voltage, by steady flashing the communication with the master

Connections

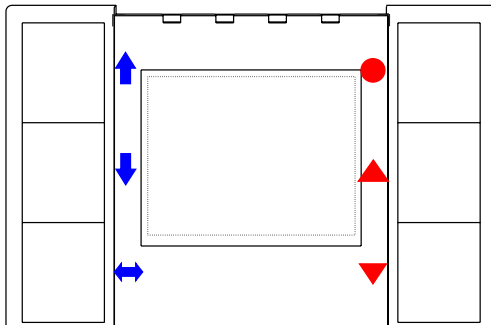
- 1 connection for the subnet (BUS A and B, RS-485)
- 1 connection for the operating voltage (Ub, 0V)

Design

- Plastic casing for rough coat or surface installation in RAL9010
On request other colours or metallized achievements are available

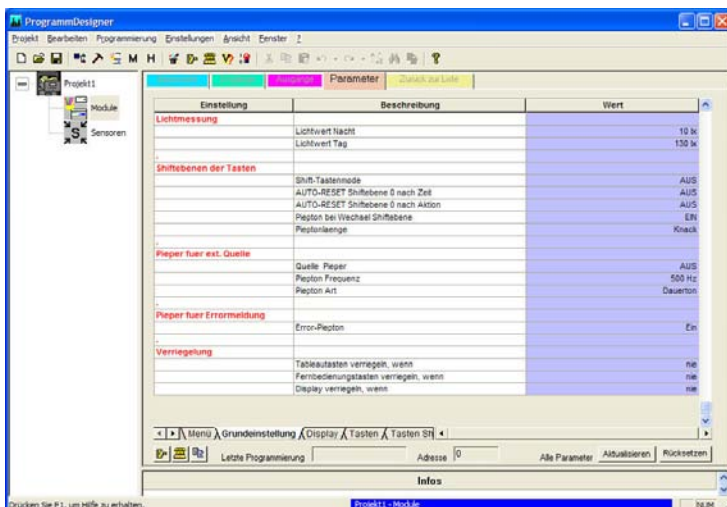
Mounting

- Fixing by associated mounting sheet on UP box or on the wall. The mounting of the room controller is done by a screw on the mounting sheet

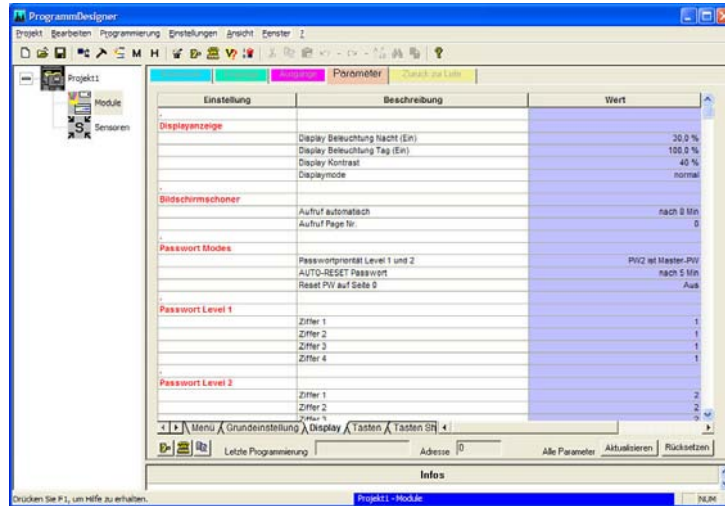


- ↑ Select main menu - or to top in the superior menu
- ↓ Select main menu - or to the bottom in the subaltern menu
- ↔ Select sub menu - browse Right or Left (is shown on the graphical bar below the menu)
- This key will be used to confirm (o.k.), switch on/off, save etc. according to the sub menu
- ▲ This key will be used for dimming, running up, control etc. according to the sub menu
- ▼ This key will be used for dimming, running down, control etc. according to the sub menu

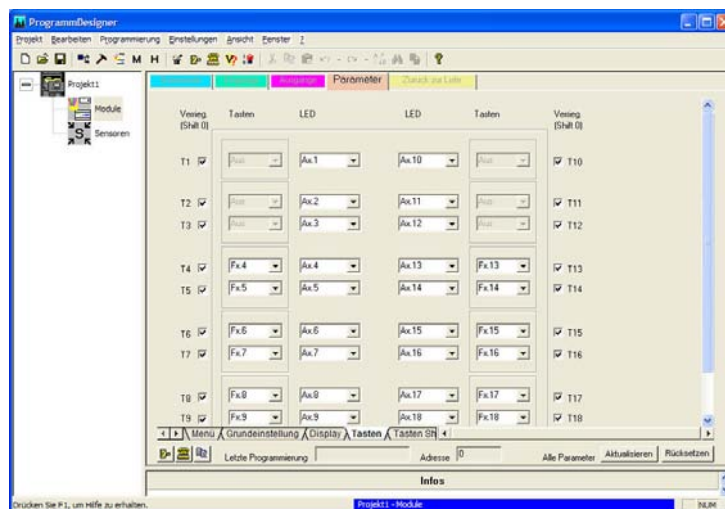
Function possibilities



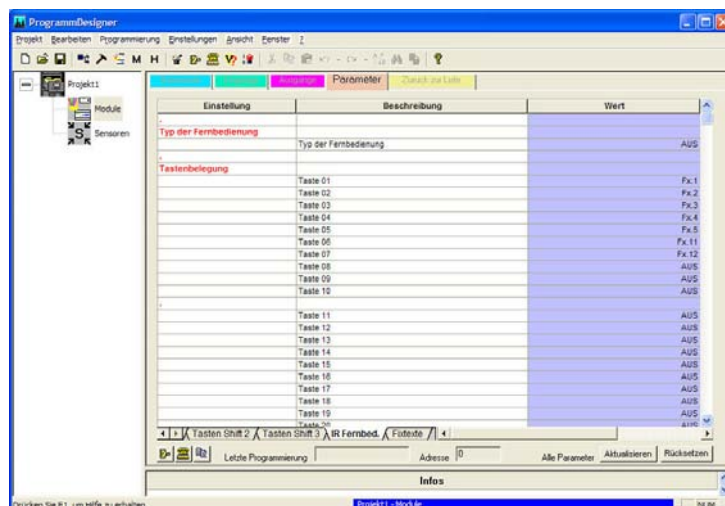
- Brightness feedback LED
- Value of the light feeler
- Functions of the shift level
- Buzzer, tone pitch and kind of control
- Locking of the keys, the display on the remote control



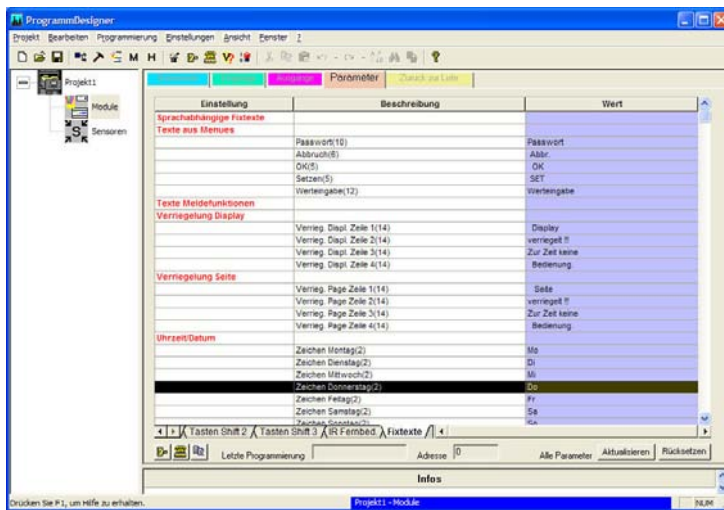
- Brightness, projection (normal or inverse) and contrast
- Screen saver side
- Password administration (2 password levels)
- Navigation keys
- External side envoking



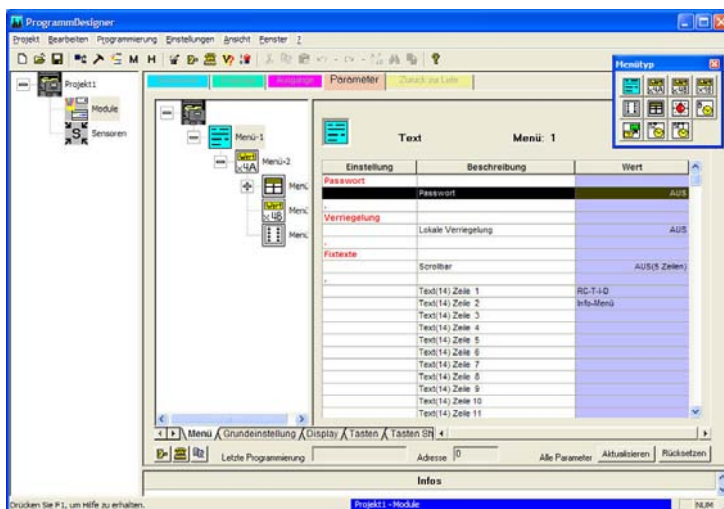
- Main level
- Shift level 1
- Shift level 2
- Shift level 3



- Allocation of the codes (up to 60 functions)



- Here you can change the standard menu texts (e. g. in a other column)



Analog value display (four fold) with bulky special functions like texts and units to the analog values. Presentation possibilities of bits, byte 0-255, byte with key signature, byte scaled 0-100, byte in %, byte as bargraph, byte in blind time, byte bin classic, byte bin ISYGLT, byte ASCII, byte hexa, byte azimuth, byte wind speed, weekday mask, word, word with key signature, word time, date, shift level, cycle time, and so on.

- Analog value display (four fold) without text functions
- Analog value display (sixteen fold) without text functions
- Light scene tableau for 8 scenes
- Blind control for 1-6 blinds
- Fault indication window for 8 or 16 messages
- Operating system detection for 1-7 counters
- Link (navigation-) menu for 2-15 links
- Branching
- Jump above
- Jump below
- Switching menu for 1-7 switching times
- Menu for programming the system clock

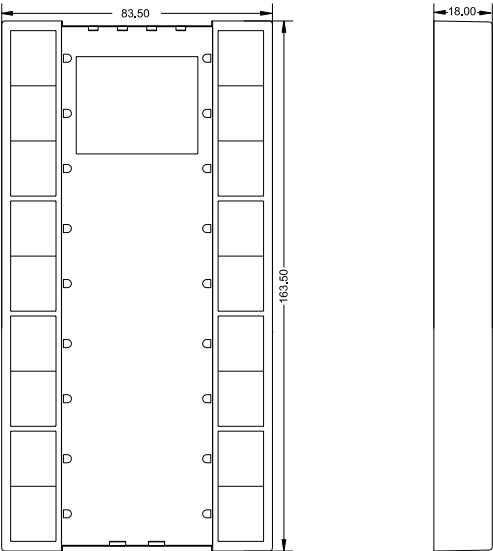
Terminal assignment

≅ Ub	Operating voltage
0V	Operating voltage
A	Subnet (BUS A, RS-485)
B	Subnet (BUS B, RS-485)

Technical data

Type	RC-T-IR-D
Art. Nr.	80023310
Operating voltage	12V - 35V DC or 12V to 27V AC
Current consumption	max. 270mA at 12V, max. 130mA at 24V DC (all LED and signs on and full brightness)
Subnet (RS-485)	max. 5,6V limited by Z-diodes
Dimensions	LxBxH, 163,5x83,5x18 (20) mm
Dimension single key	LxBxH, 16,5x13,5 mm
Dimension double key	LxBxH, 33,5x13,5 mm
Dimension display	BxH, 38x30 mm
Weight	260g
Connection	Spring-cage terminal 4x 0,25 - 0,75 mm ²
Operating temperature	-10...+50°C
Storage temperature	-25...+70°C
Humidity	0 ... 85 % r.F. non condensing
Protection class	IP30
ESD immunity	Category 3 according to IEC1000-4-2
EMC immunity	Use in typical industrial environment. Category 3 according to IEC-1000-4-4 (Test was carried out within a whole system)
CE mark	yes

View



Wiring diagram

