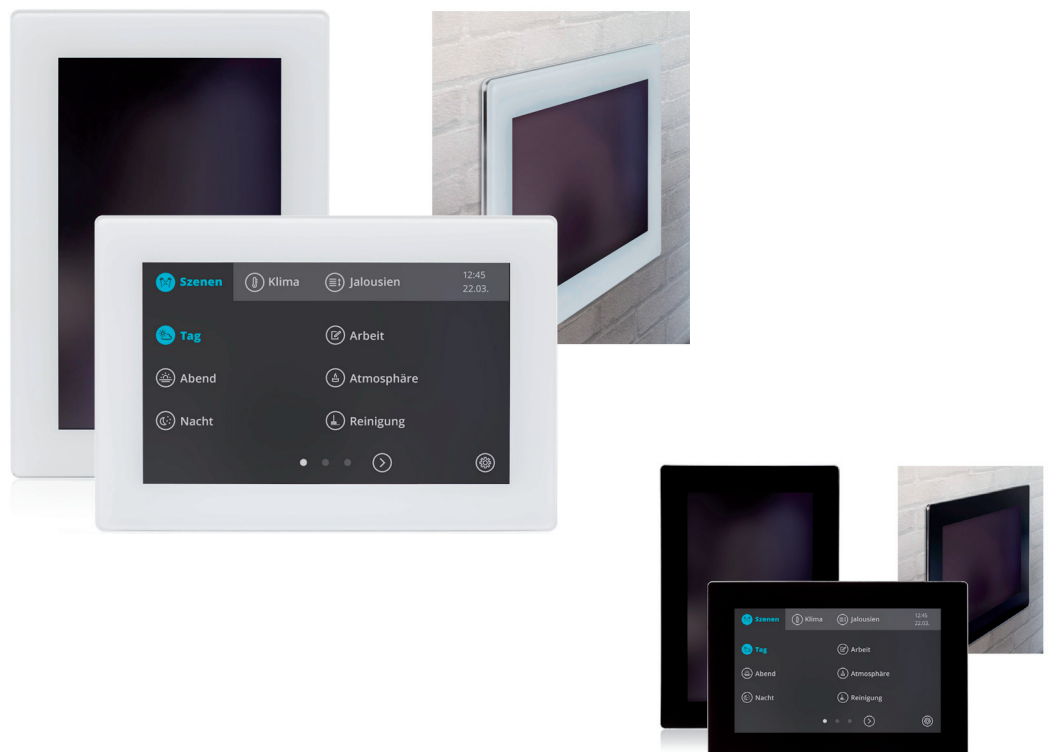


## Technical Data / Instruction Manual

**WT-G-07s-UP**  
**Article no. 80023402**

**WT-G-07w-UP**  
**Article no. 80023412**

**Wall-Touch flush-mounting black / white with glass front 7 inch**



## Directory of Content

### 1. Notes on documentation

- 1.1. Retention of documents
- 1.2. Symbols used

### 2. Safety instructions

- 2.1. Intended usage
- 2.2. Predictable mishandling
- 2.3. Safe handling
- 2.4. Qualification of staff
- 2.5. Changes to the product
- 2.6. Use of spare parts and additional equipment
- 2.7. Liability notes

### 3. Warranty

### 4. Declaration of Conformity

### 5. Service address

### 6. Maintenance / Care / Disposal

### 7. Storage

### 8. Assembly

### 9. Product description

### 10. Technical Data

- 10.1. Pin assignment

### 11. Addressing

### 12. Display view angle

### 13. Software

### 14. Assembly instructions WT-G-07x-UP

- 14.1. Display and flush-mounted housing
- 14.2. Prepare flush-mounted housing for installation
- 14.3. Connect and insert the display
- 14.4. Delivery scope WT-G-07x-UP

### 15. Dimensions

### 16. Wiring diagram

## 1. Notes on documentation

These instructions are intended for qualified personnel who are familiar with the assembly, installation and operation of the ISYGLT system. It is essential that you read these operating instructions through before commissioning and keep them accessible for further use.

SEEBACHER cannot accept any liability for damage or malfunctions resulting from failure to observe these instructions.

### 1.1. Retention of documents

These instructions and all other applicable documents are part of the product. They must be handed over to the device operator. The operator will store the documents so that they can be made available if necessary.

### 1.2. Symbols used

Observe the following safety and other instructions in the manual:



Handling instruction

The hand indicates that you should carry out an act.



Danger!

Immediate danger to life!



Attention!

General notes, useful information and special features

## 2. Safety instructions



Observe the following general safety instructions when installing and commissioning the device:

Assembly and installation of the ISYGLT module may only be carried out by a qualified electrician. Other activities in connection with the ISYGLT module, such as assembly and installation of system components with tested standard plug connections, as well as operation and configuration of the ISYGLT module may only be carried out by trained staff.

Observe the electrical installation regulations of the country in which the device is installed and operated as well as its national accident prevention regulations. In addition, observe internal company regulations (work, operating and safety regulations).



Before working on the ISYGLT module system, it must be disconnected from the power supply and secured against being switched on again. After completion of the assembly, installation and maintenance work, an electrical check must be carried out! Check all protective conductor connections and the voltages at all connection plugs as well as at each individual module slot.

### 2.1. Intended usage

**Use of the module is limited exclusively to display, monitoring and operating functions in conjunction with the ISYGLT BUS system in dry indoor rooms.**

The following instructions must be observed:

- High mechanical loads on the module and the components must be avoided.
- Connection terminals are not intended for mechanical fixing or transport of the module.
- Connecting cables must not be squeezed (e.g. between module and housing).

Any other use is not intended. The limit values stated in the technical data must not be exceeded under any circumstances.

### 2.2. Predictable mishandling

The module must not be used in the following cases in particular:

- explosive area

When operating in explosive areas, sparking can lead to deflagration, fire or explosions.

### 2.3. Safe handling

This module corresponds to the state of the art and the recognised safety regulations. Each device is tested for function and safety before delivery.

Only operate this module in perfect condition in accordance with the operating instructions, the applicable regulations and directives of the country in which the device is installed and operated, and the applicable safety and accident prevention regulations.

Extreme environmental conditions impair the function of the product.

- Protect module from shocks
- Use module indoors only
- Protect module from humidity

If the module comes from a cold to a warm location, wait about 30 minutes before activating it because of possible internal condensation.

In addition to these safety instructions, you must also observe the special safety instructions listed in the individual chapters for the individual acts.

### 2.4. Qualification of staff

Assembly, commissioning, operation, maintenance, decommissioning and disposal may only be carried out by qualified staff. Work on electrical parts may only be carried out by a trained electrician in accordance with the applicable regulations and directives.

### 2.5. Changes to the product

Unauthorized modifications to the ISYGLT module which are not described in this or the other applicable instructions can lead to malfunctions and are prohibited for safety reasons.

### 2.6. Use of spare parts and additional equipment

The module may be damaged if unsuitable spare parts and additional equipment are used. Only use original spare parts and additional equipment from the manufacturer.

### 2.7. Liability notes

SEEBACHER accepts no liability or warranty whatsoever for damage and consequential damage caused by non-compliance with the technical regulations, instructions and recommendations. SEEBACHER shall not be liable for any costs or damage incurred by the user or third parties as a result of the use of this equipment, in particular improper use of the equipment, misuse or malfunction of the connection, malfunction of the equipment or connected devices.

SEEBACHER accepts no liability for printing errors.

### 3. Warranty



We provide warranty within the framework of the statutory provisions. These are limited to the intended use of the module and refer to the repair or replacement of the ISYGLT module. Please send the device with an attached error description to our company address given below.

### 4. Declaration of Conformity



The valid declaration of conformity for the module can be requested from us free of charge by stating type and article no. as follows:

By phone: +49(0)8041/77776  
By fax: +49(0)8041/77772  
By mail: info@seebacher.de

### 5. Service address

**Seebacher GmbH**  
Marktstrasse 57  
83646 Bad Tölz  
GERMANY

Phone: +49 (0) 80 41 / 77 77 6  
Fax: +49 (0) 80 41 / 77 77 2

www.seebacher.de  
info@seebacher.de

### 6. Maintenance / Care / Disposal



The product is maintenance-free. It is sufficient from time to time to remove any dust deposits. This may only be done in a power-free state.

#### Disposal (European Union)

Do not dispose of product in household waste! Products with this symbol



must be disposed of according to the EU directive WEEE 2012/19/ EU on waste electrical and electronic equipment at the local collection points for waste electrical and electronic equipment!

### 7. Storage



The product must be stored in a dry place, protected from dirt and mechanical stress. After damp or dirty storage, the product may only be operated after a condition check by an authorised electrician.

### 8. Assembly



(Only by certified electrician!)

Mount the product only when it is in a power-free state!

Switch off the power supply, check that there is no voltage, secure against being switched on again!

The device may only be operated on voltages according to the technical data and loaded with the currents defined therein. Only use suitable equipment (system modules).

Check that there are no loose parts in the product. If this is the case and the presence of such parts is not explicitly described, do not install or commission the product.

Only use suitable cables and fixing screws.

#### Assembly site

- The product can be installed in any position in a casing (flush-mounted box, junction box, etc.) to be determined by the electrician. Observe maximum ambient temperature!

#### Assembly steps

(Read completely before assembly!)

- Mount the device in a suitable casing.
- Make the electrical connections according to the wiring diagram.
- Only after a complete connection and a visual test by a qualified electrician, the system may be put under voltage.

## 9. Product description

The ISYGLT Wall-Touch glass panels WT-G were developed as operating, control and adjustment panels for direct operation on the ISYGLT-BUS. Particular emphasis was placed here on extremely high availability, fastest operational readiness, reliability and interference immunity.

The panels are equipped with a special real-time operating system, which enables the system to be operated at the latest 2-3 seconds after switching on the voltage. The panels are also absolutely insensitive to inadvertent (as often as required) disconnection/interruption of the voltage. This is common in the construction industry, especially during installation work, and is often a problem for PC-based systems. An IP network structure is therefore not necessary here.

**The operating voltage** is supplied via the ISYGLT-typical 4-pole BUS cable with the 24V carried in it and communication in the RS-485 industry standard. The address is set via the touch interface.

**The design** of the WT-G was deliberately kept discreet in order not to disturb the architectural effect of the room. Nevertheless, it blends into the environment as a high-quality glass panel and is also harmonious with most switch ranges. The available variants are 5 inch in black and white and 7 inch in black and white as flush-mounted version or as surface-mounted version with brushed stainless steel design cover panels (other colours and versions of the panels available on request).

Images can also be displayed using the screen saver function. Thus, the panel is also a beautiful picture frame when no operation is required.

**The design of pages and functions** is very easy with the ISYGLT TouchDesigner. We have developed many standardised interfaces, which allow programming to be carried out quickly and cost-effectively. The intuitive operating concept is based on our more than 20 years of experience with touch panels in control technology. Of course, completely individual pages with individually designed designs can also be developed with the TouchDesigner. The data is transferred to the panel via a micro SD card.

The panels can be used **upright and horizontally**. In order to get an optimal display even with flat viewing angles, the orientation of the panel can be adjusted individually. The reflection-minimized multitouch-capable display is therefore optimally suited for many areas of application.

**The brightness of the display** can be adapted to local conditions and can also be intelligently controlled by external sensors or commands.

**An acoustic signal generator** for messages or alarms with adjustable frequency is integrated.

Another special feature is the „D-O-T-Switch“ function (Display-off-Touch-Switch). This allows the panel to be activated with a key function when the display is switched off. At the same time a command is sent, e.g. to switch on the light in the room. So you can switch on the light with your elbow, if you don't have a free hand, like you are used to with normal switches.

### Application examples:

- Smart Home Control Center
- Room control unit for light control, temperature control, sun protection control
- Conference room technology (many functions for multifunctional conference rooms are integrated)
- Fault indication panel, monitoring panel
- Light scene control panel for churches, event rooms and museums
- Adjustment and control panel for heating/air conditioning/ventilation
- Operating interface for aquarium or other systems (HMI)
- Alarm and indicator panel
- Audio/multiroom control

## 10. Technical data

Type designation	WT-G-07s-UP (black)	WT-G-07w-UP (white)
Article no.	80023402	80023412
Operating voltage	16V-27V DC SELV	
Current consumption	max. 176mA, normal 135mA, standby 65mA (at 24V DC)	
Resolution	800x480 px	
Brightness	TFT display adjustable via integrated light sensor	
Protocol	ISYGLT	
Programming	ProgrammDesigner and TouchDesigner	
Slot	Micro-SD for programming and data backup	
Connection	Plug-in terminal 4-pole, Phoenix PTSM0,5/4-PI-2,5 for wires rigid 0.25-0.8mm, flexible 0.2-0.5mm <sup>2</sup> , AWG 42-20	
Design	Flush-mounting on wall, furniture, desk or switch cabinet	
Dimensions panel	HxWxD 193.5mm x 132.5mm x 30.5mm	
Dimensions housing	HxWxD 178mm x 119.5mm x 35mm	
Weight	850g	
Operating temperature	+5°C to +50°C	
Storage temperature	-25°C to +70°C	
Humidity	0-85% r. h. non condensing	
Protection class	IP40	
CE mark	Yes	

### 10.1. Pin assignment

4-pole plug for 2 x 2 x 0.6-0.8mm

Connection	Designation
=Ub	Operating voltage
0V	0V Operating voltage
A	BUS A (Subnet RS-485)
B	BUS B (Subnet RS-485)

## 11. Addressing

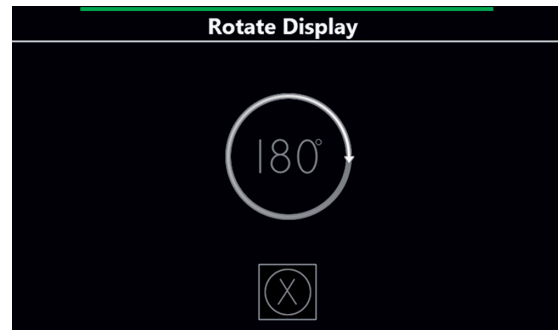
You can set the BUS address for the Wall-Touch in the menu on the touch panel. How to access the setting dialog box depends on where the programmer created the link.



## 12. Display view angle

The panels can be used upright and horizontally. This is defined in the project settings. Due to the technology, the displays have a viewing direction in which the polarisation causes a slightly poorer recognition from flat angles.

To avoid this, the display can be rotated by 180°; the panel is also simply installed rotated. There is a dialogue for this purpose, in which the green line also shows the optimum side for flat/side viewing.



## 13. Software

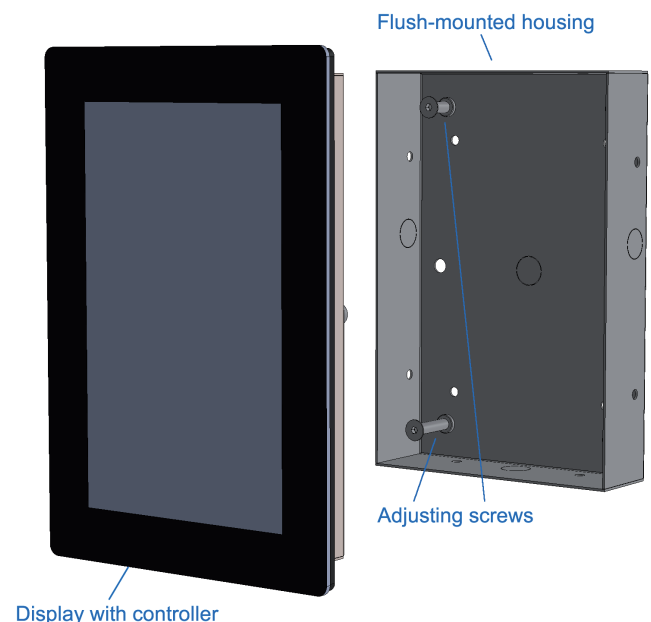
To program the functions you need the ProgrammDesigner. For designing the touch interface and setting parameters the TouchDesigner is available.

## 14. Assembly instructions WT-G-07x-UP

### 14.1. Display and flush-mounted housing

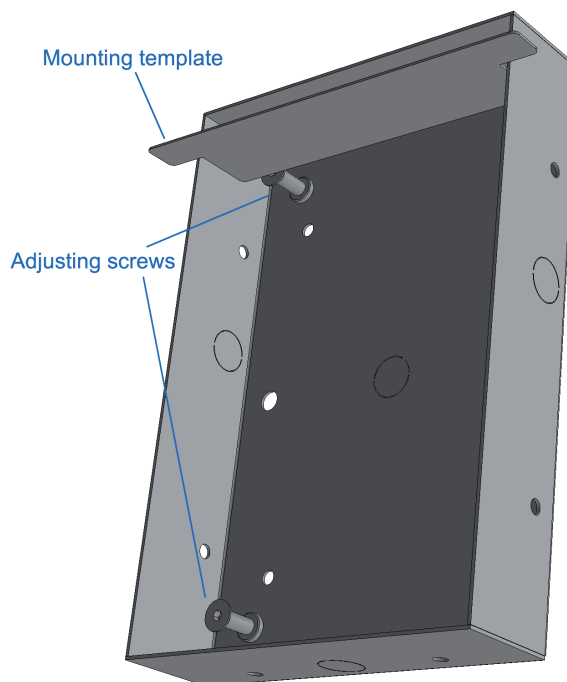
First of all, the flush-mounted housing must be placed in a wall (masonry) as flush as possible with the front. The housing must not protrude. Pre-stampings are provided for cable entry, which can be opened as required.

If the housing is to be installed in a drywall or in furniture, this can easily be done by screwing it into a corresponding sub-construction using the drill holes provided on the sides.



## 14.2. Prepare flush-mounted housing for installation

As the Wall-Touch is inserted flush with the wall and then held in place with magnets, adjusting screws must be set using the template supplied. To do this, simply place the template on the wall and set the exact depth by screwing the adjusting screws in or out.

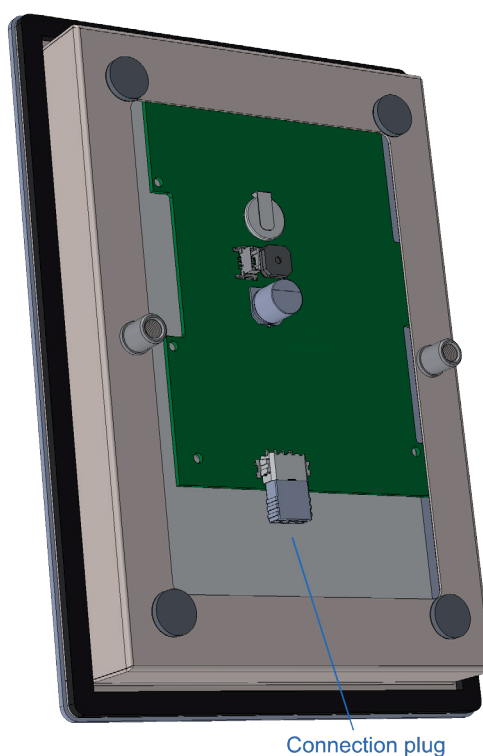


## 14.3. Connect and insert the display

After the screws have been adjusted, only the BUS cable is connected to the plug, this is plugged onto the controller and then the panel is snapped into the flush-mounted housing.

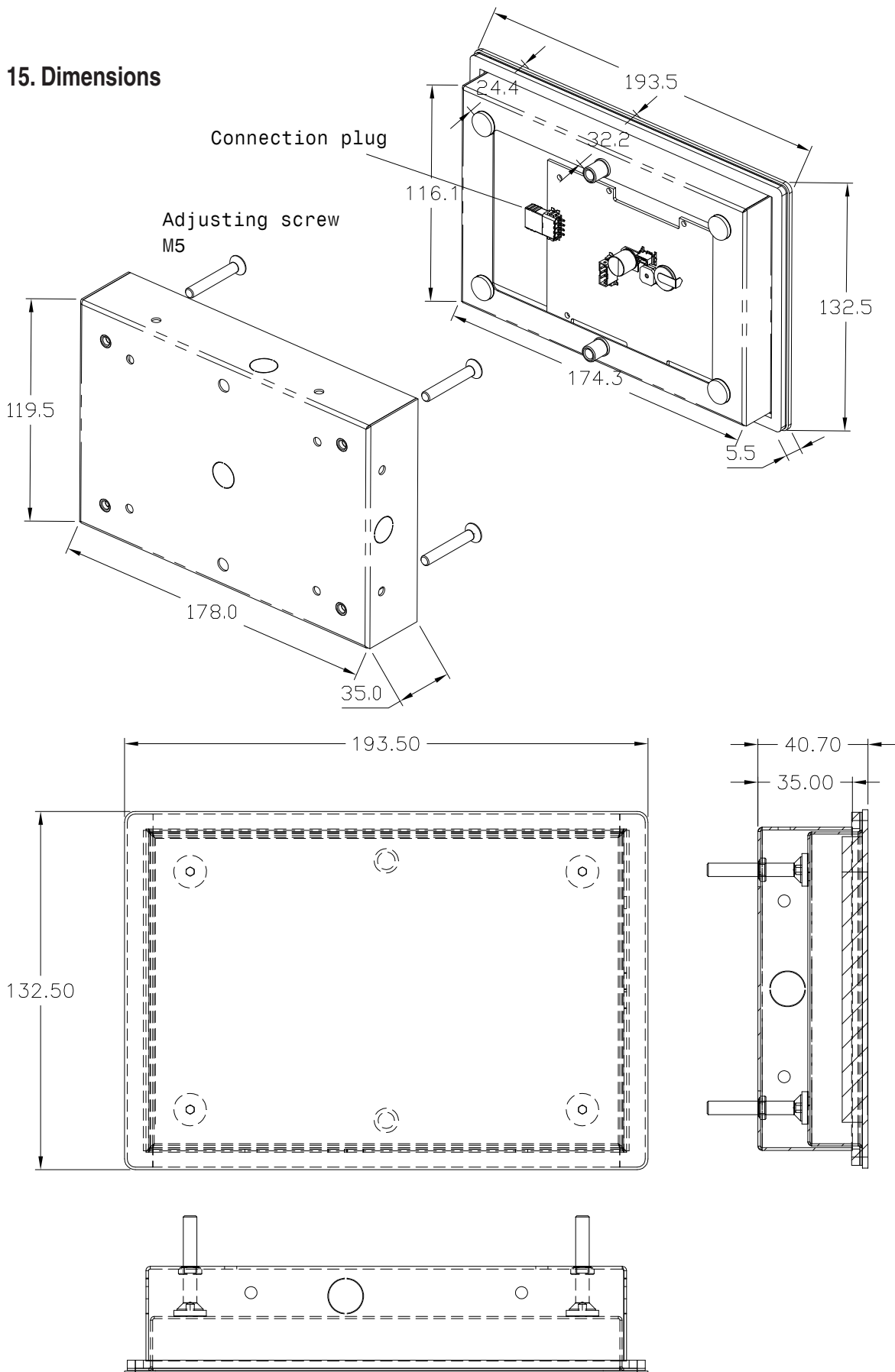
## 14.4. Delivery scope WT-G-07x-UP

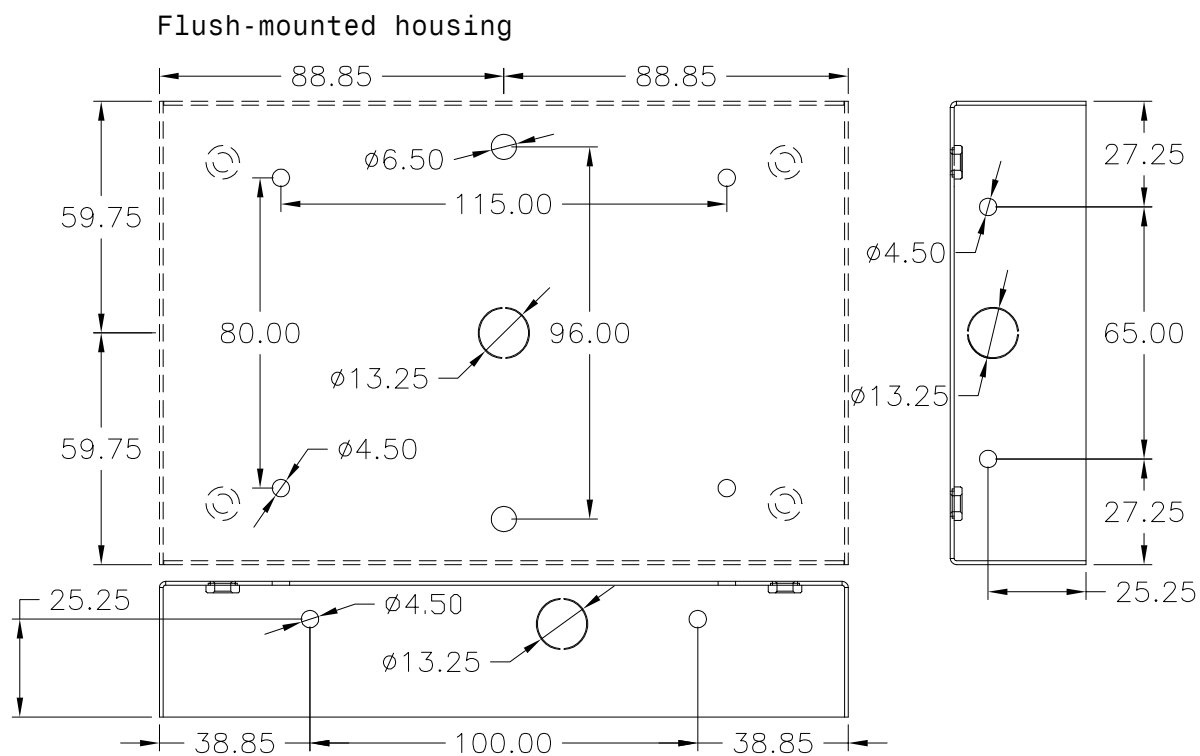
- 1 flush-mounted housing
- 4 adjusting screws
- 1 mounting template
- 1 display in front housing with foam rubber seal
- 1 Micro-SD card
- 1 data sheet / instruction manual





## 15. Dimensions





## 16. Wiring diagram

